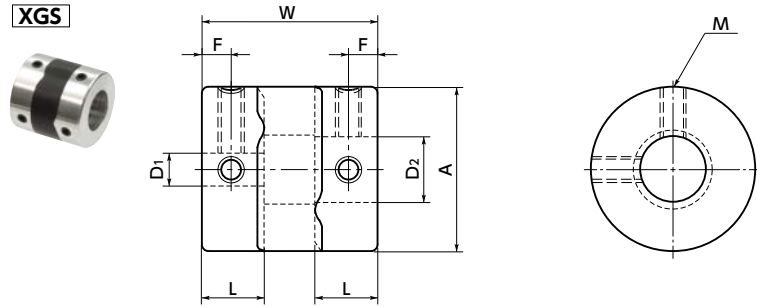


XGS Flexible coupling - High-gain rubber type (short) - Set screw type

WEB Selection Tool
 WEB CAD Download
 Zero Backlash
 High gain supported
 High torque
 Vibration absorption



Dimensions

Unit : mm

Part Number	A	L	W	F	M	Screw Tightening Torque (N·m)
XGS-15	15	6.5	18	3	M3	0.7
XGS-19	19	7.7	20	4	M3	0.7
XGS-25	25	9.5	27	5	M4	1.7
XGS-27	27	9.5	27	5	M4	1.7
XGS-30	30	11	30	5.5	M4	1.7
XGS-34	34	12	35	6	M5	4
XGS-39	39	15.5	40	8	M5	4

Part Number	Standard bore diameter (dimensional allowance H8)									
	D1-D2									
XGS-15	3-5	3-6	4-4	4-5	4-6	4.5-5	5-5	5-6	6-6	
XGS-19	4-5 8-8	5-5	5-6	5-7	5-8	6-6	6-6.35	6-7	6-8	6.35-8
XGS-25	5-6 8-10	5-8 8-11	6-6 8-12	6-8 10-10	6-10 10-12	6-11 12-12	6-12	6.35-8	6.35-10	8-8
XGS-27	5-6 8-10	5-8 8-11	5-14 8-12	6-6 8-14	6-8 10-10	6-10 10-12	6-11 10-14	6-12 12-12	6-14 12-14	8-8 14-14
XGS-30	8-8 10-15	8-10 11-12	8-11 12-12	8-12 12-14	8-14 12-15	8-15 14-14	10-10 14-15	10-11 15-15	10-12	10-14
XGS-34	8-8 10-15	8-10 11-11	8-11 11-12	8-12 12-12	8-14 12-14	8-15 12-15	10-10 14-14	10-11 14-15	10-12 15-15	10-14 16-16
XGS-39	10-10 12-20	10-12 14-14	10-14 14-15	10-15 14-16	10-16 15-15	12-12 15-16	12-14 15-19	12-15 16-16	12-16 17-17	12-19 20-20

- All products are provided with hex socket set screw.
- In a case where the bore diameter is $\phi 4$ or less, the setscrew is used in only one place.
- Recommended dimensional allowances of applicable shaft diameter are h6 and h7.

Performance

Part Number	Max. Bore Diameter (mm)	Rated*1 torque (N·m)	Max. Rotational Frequency (min ⁻¹)	Moment*2 of Inertia (kg·m ²)	Static Torsional Stiffness (N·m/rad)	Max. Lateral Misalignment (mm)	Max. Angular Misalignment (°)	Max. Axial Misalignment (mm)	Mass*2 (g)
XGS-15	6	0.5	42000	2.2×10^{-7}	25	0.15	1.5	± 0.2	7
XGS-19	8	0.8	33000	6.3×10^{-7}	63	0.15	1.5	± 0.2	12
XGS-25	12	2.3	25000	2.4×10^{-6}	100	0.15	1.5	± 0.2	26
XGS-27	14	2.3	23000	3.2×10^{-6}	120	0.15	1.5	± 0.2	29
XGS-30	15	3.3	21000	5.6×10^{-6}	160	0.2	1.5	± 0.3	41
XGS-34	16	5.5	18000	1.1×10^{-5}	350	0.2	1.5	± 0.3	62
XGS-39	20	7	16000	2.2×10^{-5}	440	0.2	1.5	± 0.3	91

*1: Correction of rated torque due to load fluctuation is not required. However, if ambient temperature exceeds 30°C, be sure to correct the rated torque with temperature correction factor shown in the following table. XGS's allowable operating temperature is -20°C to 80°C.

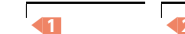
*2: These are values with max. bore diameter.

• Ambient Temperature / Temperature Correction Factor

Ambient Temperature	Temperature Correction Factor
-20°C to 30°C	1.00
30°C to 40°C	0.80
40°C to 60°C	0.70
60°C to 80°C	0.55

• Part number specification

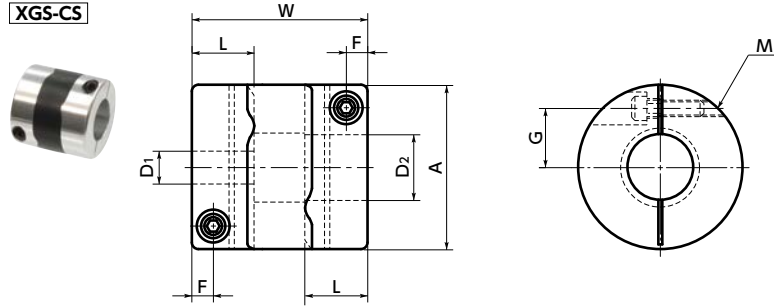
XGS-34-11-12



Additional Keyway at Shaft Hole → P.803 Available / Add'l charge
 Cleanroom Wash & Packaging → P.807 Available / Add'l charge
 Change to Stainless Steel Screw → P.805 Available / Add'l charge

XGS-CS Flexible coupling - High-gain rubber type (short) - Single clamp type

WEB Selection Tool
 WEB CAD Download
 Zero Backlash
 High gain supported
 High torque
 Vibration absorption



Dimensions

Unit : mm

Part Number	A	L	W	F	G	M	Screw Tightening Torque (N·m)
XGS-15CS	15	6.5	18	2.15	5	M1.6	0.25
XGS-19CS	19	7.7	20	2.65	6.5	M2	0.5
XGS-25CS	25	9.5	27	3.25	9	M2.5	1
XGS-27CS	27	9.5	27	3.25	10	M2.5	1
XGS-30CS	30	11	30	4	11	M3	1.5
XGS-34CS	34	12	35	4	12.25	M3	1.5
XGS-39CS	39	15.5	40	4.5	14.5	M4	2.5

Part Number	Standard bore diameter D1-D2									
	3-5	3-6	4-4	4-5	4-6	4.5-5	5-5	5-6	6-6	
XGS-15CS	3-5	3-6	4-4	4-5	4-6	4.5-5	5-5	5-6	6-6	
XGS-19CS	4-5 8-8	5-5	5-6	5-7	5-8	6-6	6-6.35	6-7	6-8	6.35-8
XGS-25CS	5-6 8-10	5-8 8-11	6-6 8-12	6-8 10-10	6-10 10-12	6-11 12-12	6-12	6.35-8	6.35-10	8-8
XGS-27CS	5-6 8-10	5-8 8-11	5-14 8-12	6-6 8-14	6-8 10-10	6-10 10-12	6-11 10-14	6-12 12-12	6-14 12-14	8-8 14-14
XGS-30CS	8-8 10-15	8-10 11-12	8-11 12-12	8-12 12-14	8-14 12-15	8-15 14-14	10-10 14-15	10-11 15-15	10-12	10-14
XGS-34CS	8-8 10-15	8-10 11-11	8-11 11-12	8-12 12-12	8-14 12-14	8-15 12-15	10-10 14-14	10-11 14-15	10-12 15-15	10-14 16-16
XGS-39CS	10-10 12-20	10-12 14-14	10-14 14-15	10-15 14-16	10-16 15-15	12-12 15-16	12-14 15-19	12-15 16-16	12-16 17-17	12-19 20-20

- All products are provided with hex socket head cap screw.
- Recommended dimensional allowances of applicable shaft diameter are h6 and h7.
- In case of mounting on D-cut shaft, be careful about the position of the D-cut surface of the shaft. → P.258

Performance

Part Number	Max. Bore Diameter (mm)	Rated*1 torque (N·m)	Max. Rotational Frequency (min ⁻¹)	Moment*2 of Inertia (kg·m ²)	Static Torsional Stiffness (N·m/rad)	Max. Lateral Misalignment (mm)	Max. Angular Misalignment (°)	Max. Axial Misalignment (mm)	Mass*2 (g)
XGS-15CS	6	0.5	42000	2.0×10 ⁻⁷	25	0.15	1.5	±0.2	7
XGS-19CS	8	0.8	33000	5.7×10 ⁻⁷	63	0.15	1.5	±0.2	11
XGS-25CS	12	2.3	25000	2.2×10 ⁻⁶	100	0.15	1.5	±0.2	24
XGS-27CS	14	2.3	23000	3.0×10 ⁻⁶	120	0.15	1.5	±0.2	27
XGS-30CS	15	3.3	21000	5.3×10 ⁻⁶	160	0.2	1.5	±0.3	38
XGS-34CS	16	5.5	18000	9.9×10 ⁻⁶	350	0.2	1.5	±0.3	58
XGS-39CS	20	7	16000	2.0×10 ⁻⁵	440	0.2	1.5	±0.3	86

*1 : Correction of rated torque due to load fluctuation is not required. However, if ambient temperature exceeds 30°C, be sure to correct the rated torque with temperature correction factor shown in the following table. **XGS-CS**'s allowable operating temperature is -20°C to 80°C.

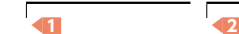
*2 : These are values with max. bore diameter.

• Ambient Temperature / Temperature Correction Factor

Ambient Temperature	Temperature Correction Factor
-20°C to 30°C	1.00
30°C to 40°C	0.80
40°C to 60°C	0.70
60°C to 80°C	0.55

• Part number specification

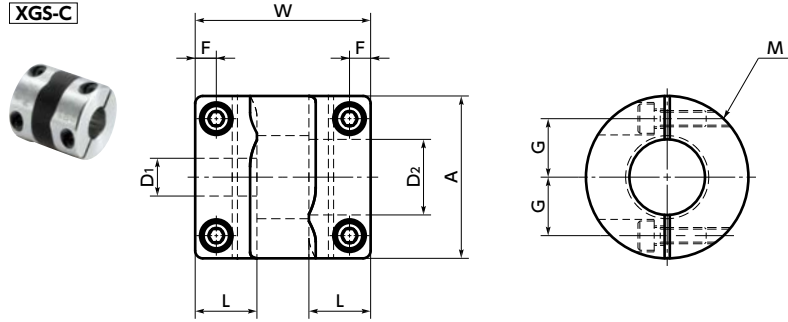
XGS-34CS-11-12



Additional Keyway at Shaft Hole → P.803 Available / Add'l charge
 Cleanroom Wash & Packaging → P.807 Available / Add'l charge
 Change to Stainless Steel Screw → P.805 Available / Add'l charge

XGS-C Flexible coupling - High - gain rubber type - Short type

WEB Selection Tool | WEB CAD Download | Zero Backlash | High gain supported | High torque | Vibration absorption



Dimensions

Unit : mm

Part Number	A	L	W	F	G	M	Screw Tightening Torque (N·m)
XGS-15C	15	6.5	18	2.15	5	M1.6	0.25
XGS-19C	19	7.7	20	2.65	6.5	M2	0.5
XGS-25C	25	9.5	27	3.25	9	M2.5	1
XGS-30C	30	11	30	4	11	M3	1.5
XGS-34C	34	12	35	4	12.25	M3	1.5
XGS-39C	39	15.5	40	4.5	14.5	M4	2.5

Part Number	Standard Bore Diameter D1-D2									
XGS-15C	3-5	3-6	4-4	4-5	4-6	4.5-5	5-5	5-6	6-6	
XGS-19C	4-5 8-8	5-5	5-6	5-7	5-8	6-6	6-6.35	6-7	6-8	6.35-8
XGS-25C	5-6 8-10	5-8 8-11	6-6 8-12	6-8 10-10	6-10 10-12	6-11 12-12	6-12	6.35-8	6.35-10	8-8
XGS-30C	8-8 10-15	8-10 11-12	8-11 12-12	8-12 12-14	8-14 12-15	8-15 14-14	10-10 14-15	10-11 15-15	10-12	10-14
XGS-34C	8-8 10-15	8-10 11-11	8-11 11-12	8-12 12-12	8-14 12-14	8-15 12-15	10-10 14-14	10-11 14-15	10-12 15-15	10-14 16-16
XGS-39C	10-10 12-20	10-12 14-14	10-14 14-15	10-15 14-16	10-16 15-15	12-12 15-16	12-14 15-19	12-15 16-16	12-16 17-17	12-19 20-20

- All products are provided with hex socket head cap screw.
- Recommended dimensional allowances of applicable shaft diameter are h6 and h7.
- In case of mounting on D-cut shaft, be careful about the position of the D-cut surface of the shaft. ➔ P.258

Performance

Part Number	Max. Bore Diameter (mm)	Rated*1 torque (N·m)	Max. Rotational Frequency (min ⁻¹)	Moment*2 of Inertia (kg·m ²)	Static Torsional Stiffness (N·m/rad)	Max. Lateral Misalignment (mm)	Max. Angular Misalignment (°)	Max. Axial Misalignment (mm)	Mass*2 (g)
XGS-15C	6	0.5	42000	2.0×10 ⁻⁷	25	0.15	1.5	±0.2	7
XGS-19C	8	0.8	33000	6.2×10 ⁻⁷	63	0.15	1.5	±0.2	12
XGS-25C	12	2.3	25000	2.3×10 ⁻⁶	100	0.15	1.5	±0.2	25
XGS-30C	15	3.3	21000	5.5×10 ⁻⁶	160	0.2	1.5	±0.3	39
XGS-34C	16	5.5	18000	1.0×10 ⁻⁵	350	0.2	1.5	±0.3	62
XGS-39C	20	7	16000	2.1×10 ⁻⁵	440	0.2	1.5	±0.3	85

*1: Correction of rated torque due to load fluctuation is not required. However, if ambient temperature exceeds 30°C, be sure to correct the rated torque with temperature correction factor shown in the following table. The allowable operating temperature of **XGS-C** is -20°C to 80°C.

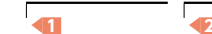
*2: These are values with max. bore diameter.

Ambient Temperature / Temperature Correction Factor

Ambient temperature	Temperature correction factor
-20°C to 30°C	1.00
30°C to 40°C	0.80
40°C to 60°C	0.70
60°C to 80°C	0.55

Part number specification

XGS-34C-11-12



Additional Keyway at Shaft Hole ➔ P.803 | Cleanroom Wash & Packaging ➔ P.807 | Change to Stainless Steel Screw ➔ P.805